

## AIR BLENDER – SPLIT UNIT INSTALLATION INSTRUCTIONS

### PURPOSE:

Provide assembly and installation instructions and recommendations for the installation of the Air Blender Split Units (sizes 96 and larger).

### AIR BLENDER INSTALLATION AND ASSEMBLY:

Carefully remove banding and other packaging and bracing material from the halves or quadrants. Although Blender Products secured the sections in place on the pallets, there is a chance they could shift in transport, care should be taken that the sections don't fall when un-packaging. A sealed plastic bag of hardware (nuts, bolts, washers, couplers) is secured to each pallet. Each bag has enough hardware for each individual blender.



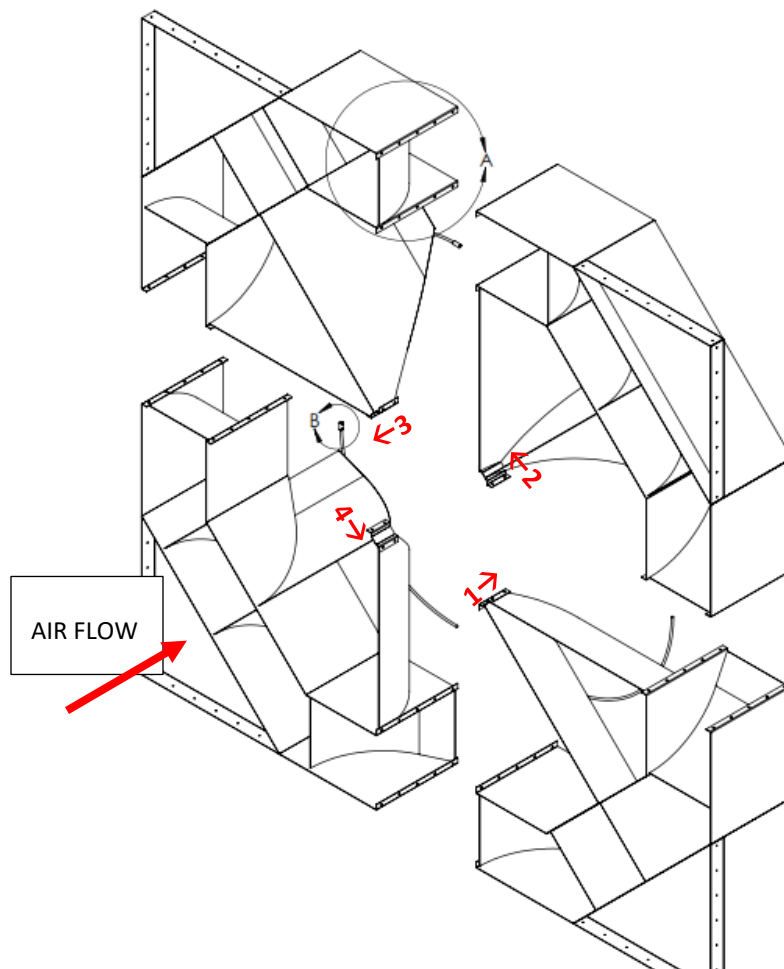
### NOTES FOR LIFTING and TRANSPORTING ON SITE:

- DO NOT EVER LIFT FROM THE ROUND RING, THE RING'S WELD IS NOT STRONG ENOUGH TO LIFT THE WEIGHT OF THE QUADRANT BY THIS RING.
- DO NOT LIFT ONLY FROM THE CENTER BRACKET OF THE QUADRANT
- DO NOT LIFT FROM THE PLYWOOD SUPPORT BRACKETS (IF ANY).
- THE QUADRANTS CAN BE LIFTED USING AN EYELET ON THE OUTER FLANGE OR BY A STRAP THROUGH THE OUTER BLADES.
- USE TWO OR MORE PEOPLE TO LIFT EACH QUADRANT WHEN MANUEVERING BY HAND.

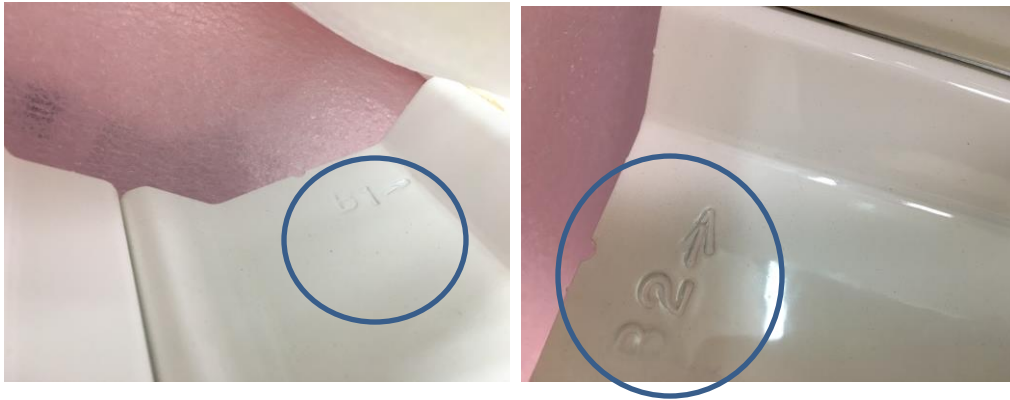
## AIR BLENDER – SPLIT UNIT INSTALLATION INSTRUCTIONS

Note the flow sticker on one of the four quadrants. Also note the number and arrow direction stamped on the center bracket (see pictures on the next page). The order of the quadrants should be according to the diagram below with quadrant #1 in the bottom right-hand corner when looking at the front face of the blender (looking with the direction of flow). Quadrant #2 should be installed in the top right-hand corner, and so on according to the diagram below. This is important so that the bolt holes match up and the round ring will match up with minimal bending of the ring. The arrows are meant to show that #1 goes to #2, #2 goes to #3, #3 goes to #4 and #4 goes to #1.

**ENSURE THAT ONLY QUADRANTS FROM ONE SHIPPING CRATE ARE ASSEMBLED TOGETHER, DO NOT MIX AND MATCH QUADRANTS FROM DIFFERENT CRATES AS THE ROUND RING MAY NOT MATCH UP.**



## AIR BLENDER – SPLIT UNIT INSTALLATION INSTRUCTIONS



Stamped numbers and arrows are located inside the center bracket

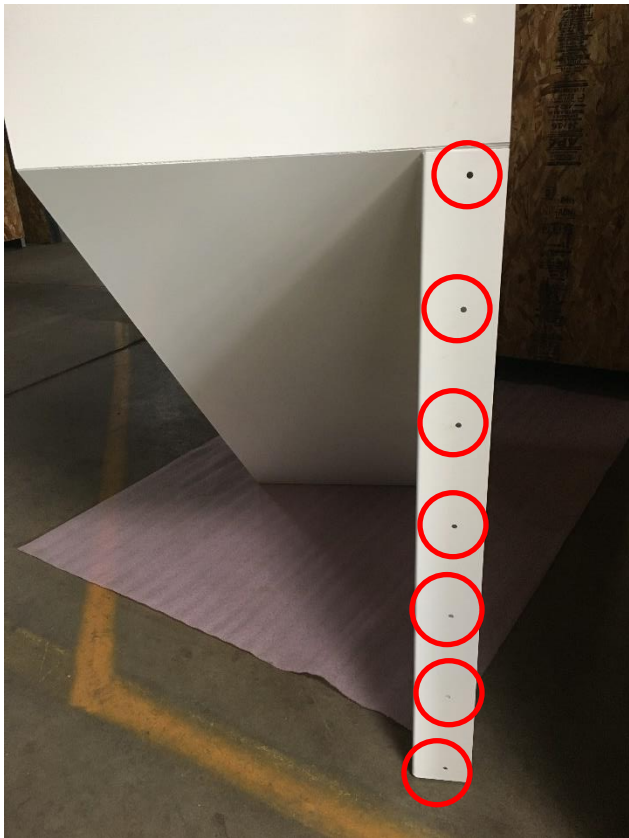
Step 1: Starting with the quadrants labeled “1→” and “2→”, line up the bolt holes and fasten together with the supplied 3/8” hardware. May want to only hand tighten the hardware until all quadrants have been lined up. Continue this process for the remaining quadrants.

## AIR BLENDER – SPLIT UNIT INSTALLATION INSTRUCTIONS

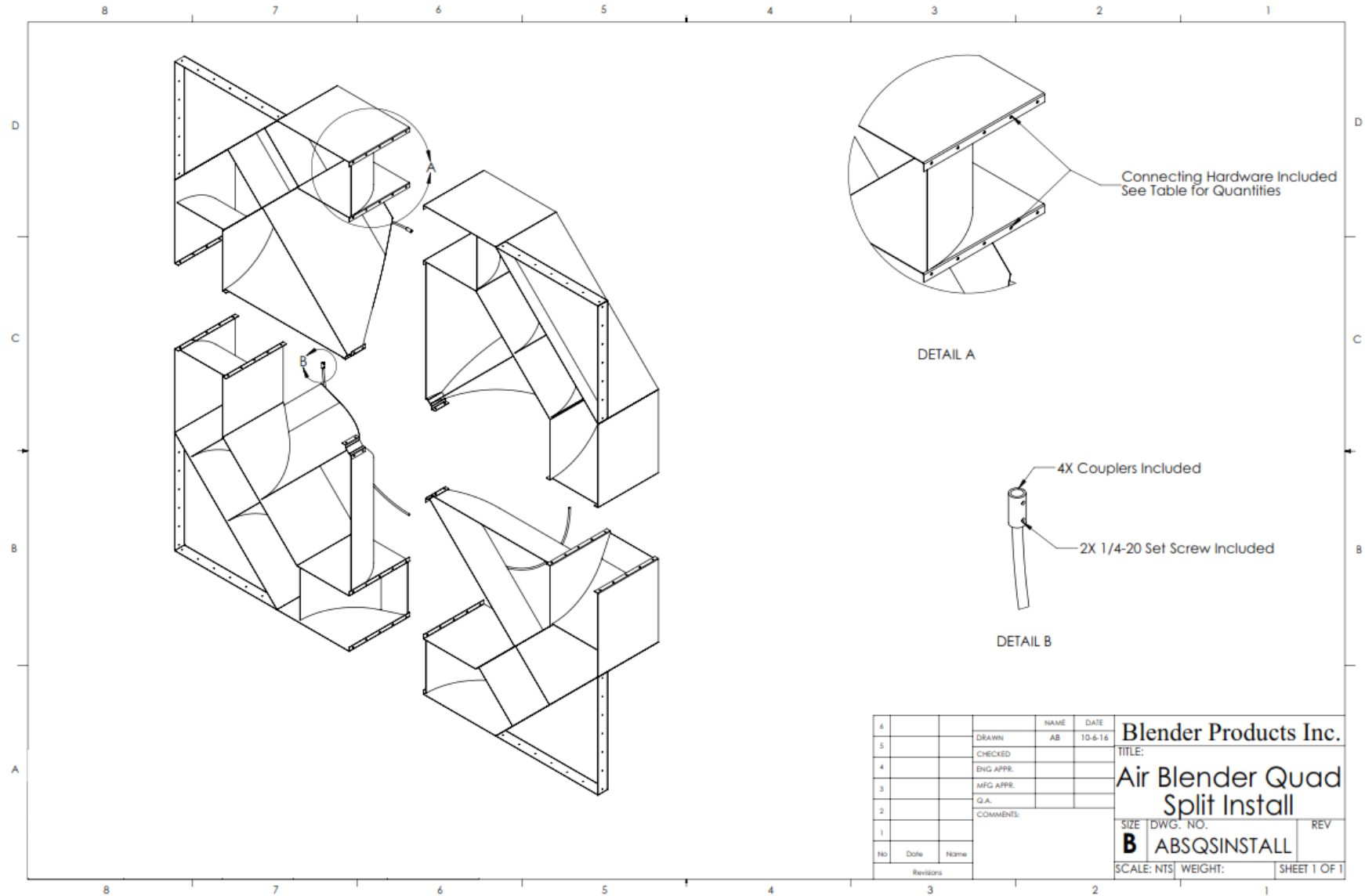
Step 2: Secure the rolled rings by sliding the provided couplers onto the rings where they connect and tightening the set screws.

Step 3: Once all four (4) quadrants are lined up and couplers have been placed on the rolled ring, tighten all bolts and nuts to a minimum of 13 lb-ft (17.63 Nm) torque.

Step 4: Move the assembled mixer into the installation location (if not already in place), ensure the flow arrow is properly aligned with the direction of flow and attach the corners of the blender to the walls using self-tapping screws or other preferred hardware (not provided by Blender).



AIR BLENDER – SPLIT UNIT  
INSTALLATION INSTRUCTIONS



6			NAME	DATE	<b>Blender Products Inc.</b> TITLE: <b>Air Blender Quad Split Install</b> SIZE DWG. NO.    REV <b>B</b> ABSQSINSTALL SCALE: NTS    WEIGHT:    SHEET 1 OF 1
5		DRAWN	AB	10-6-16	
4		CHECKED			
4		ENG APPR.			
3		MFG APPR.			
2		Q.A.			
1		COMMENTS:			
Revisions		No	Date	Name	